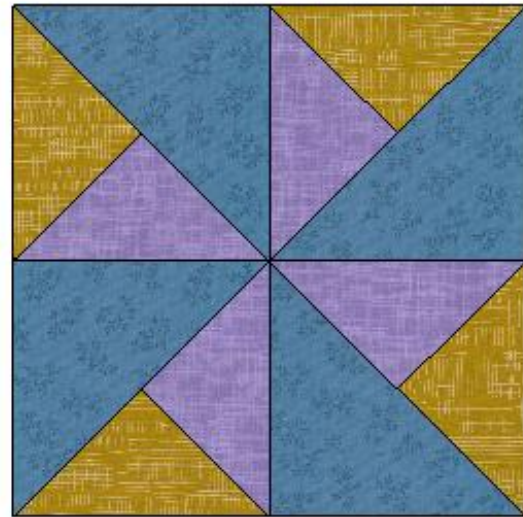
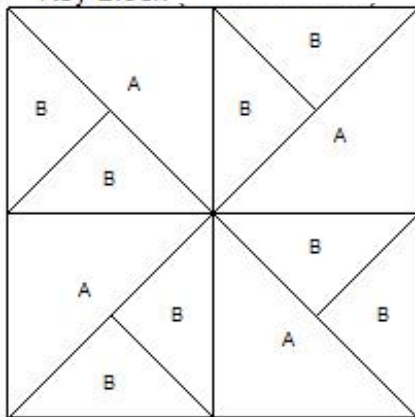


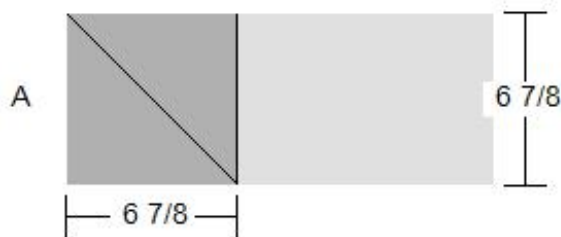
# Windmill - Block 1

Key Block



Made from 4 (QST) Quarter Square Triangles

Cutting Diagrams



Patch Count



I cut these 7"



I cut these 7 1/2"

We will begin with one of the easier blocks.

This block uses 3 of the 4 quilt colors/fabrics and does not require any background fabric.

The measurements above are EXACT. I will be cutting larger and trimming the block down to size.

**CUTTING INSTRUCTIONS:**

PATCH A – cut two 7” squares and then cut diagonally.

PATCH B – cut one 7 ½” square EACH of two colors and split diagonally twice, making 4 triangles of each color.

**SEWING INSTRUCTIONS:**

Layout the overall block the way you want the B patches to face. Fold one B patch face to face with the other and pin the seam you want to sew.

1. Sew one PATCH B of each color together along the short side. Making sure you do the same side for each of the four pairs. (layout complete block, fold face to face the B patches, and stitch together)
2. Press the seams open.
3. Place a ruler along the seam of the two patch B's, trim along the edge if needed to get a straight edge.



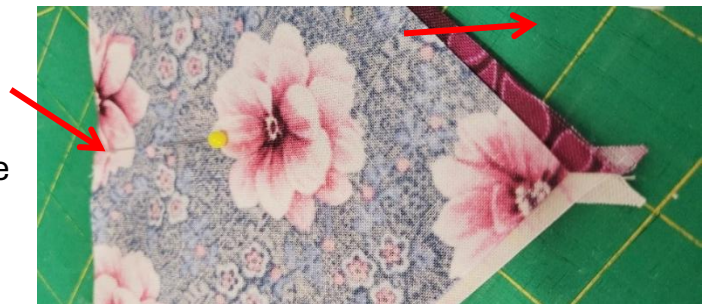
4. Fold PATCH A in half to find the center of the longer side, finger press that center point.



5. Place the sewn PATCH B's together with patch A, matching the center point and checking the point is along the seam.



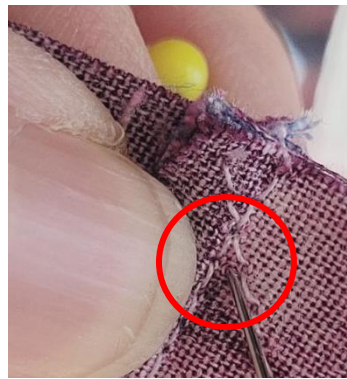
6. Square this block to  $6\frac{1}{2}$ " square with the centerpoint found. Place the  $3\frac{1}{4}$ " point at the center of the block and line the  $45^\circ$  line along the seam.



7. Sew two center seams together and press seams.



8. Using a pin placed down through the center point and into the center point of the other seam, this will help keep your points when you sew the two together. Stitch along the seam making sure that your needle stays just "off" that point stitching.



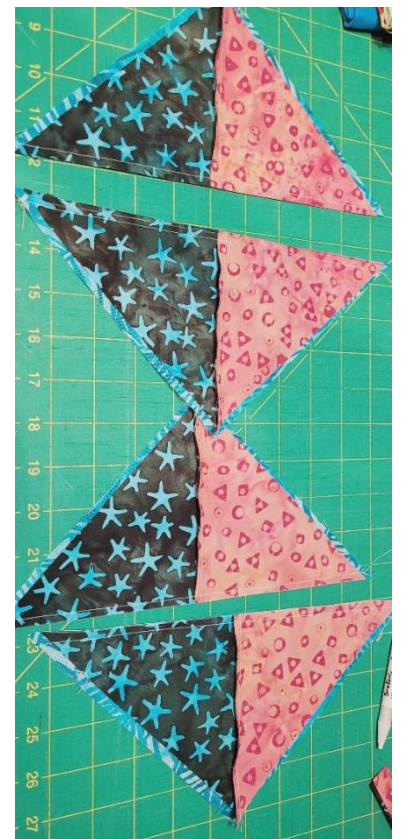
9. Finished block should measure 12 1/2 " square.

If you check around on the internet you will find an easier way to make the "Quarte Square Triangles". I have attached a link for you

<https://createwhimsy.com/projects/how-to-make-the-split-quarter-square-triangle-quilt-block/>



Cut your squares as instructed in the traditional manner. **DO NOT MAKE DIAGONAL CUTS.** Place "B" squares right sides together, mark diagonal line and sew 1/4 " seams on either side of the line. Then cut on the line. Place the half square triangles (HST) right sides together onto "A" square and draw a diagonal line **PERPENDICULAR** to the seam. Sew a 1/4 " seam on either side of the line then cut on the line. Yielding 4 QST Quarter Square Triangles. Sew the block together. You will have a pin wheel but the "B" triangles will be opposite each other.



But be aware that the final block does not look the same. It's okay if you don't care, I don't care. Remember this is your quilt. I just wanted to give you a heads up.

