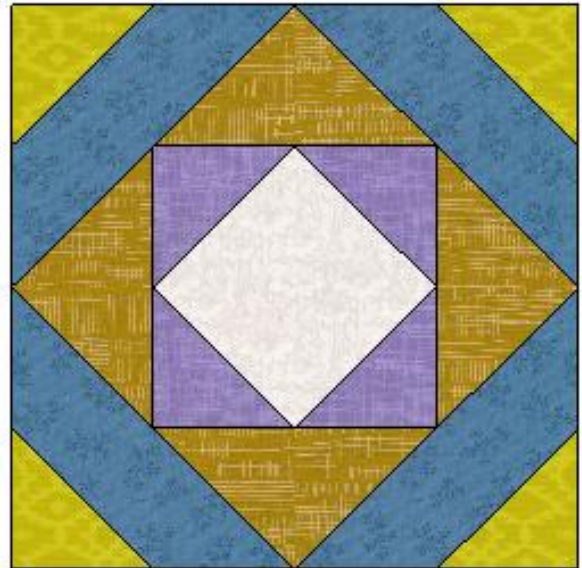
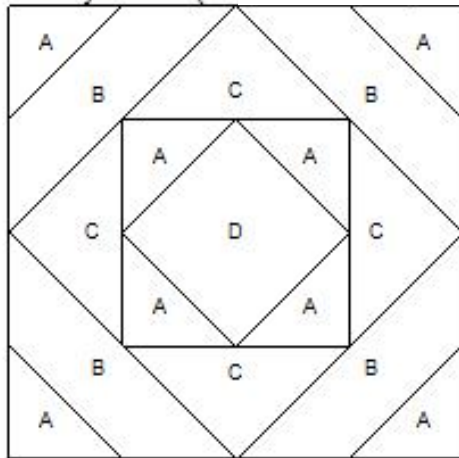


# Mosaic, No. 5(2)

Key Block (1/4)



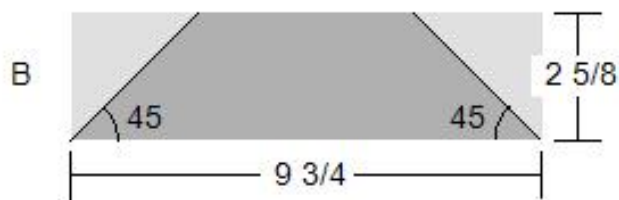
**“D” CENTER SQUARE -  
BEGIN WITH A 4 3/4” x 4 3/4”  
CENTER SQUARE**

Cutting Diagrams

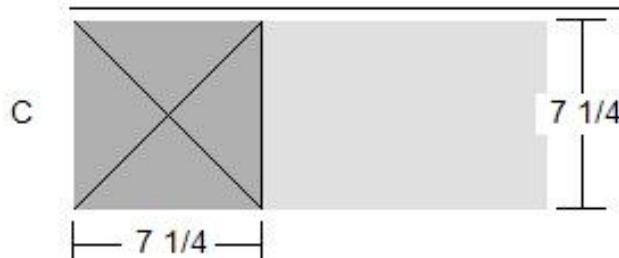
Patch Count



**I cut 2 of each color at 4” square, then cut diagonal, making 4 each color.**



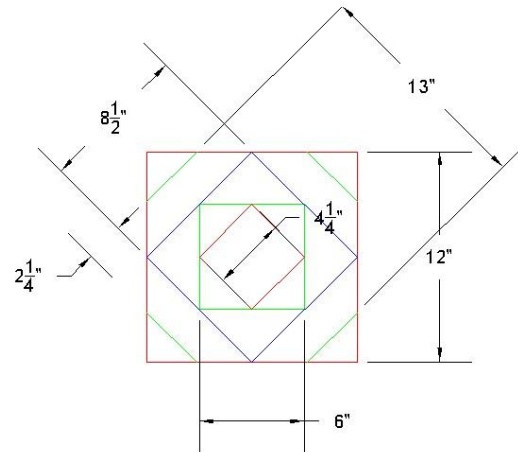
**I cut these 10 1/2 x 3” rectangles**



**I cut these 8” squares then cut diagonal twice.**

If you are using 4 specific fabrics, this block uses all 4 quilt colors/fabrics. If you're going scrappy, just pick 4 fabrics you like together. You can also fussy cut the center square.

The measurements above (in black) are EXACT. I will be cutting larger (in red) and trim the block down to size.



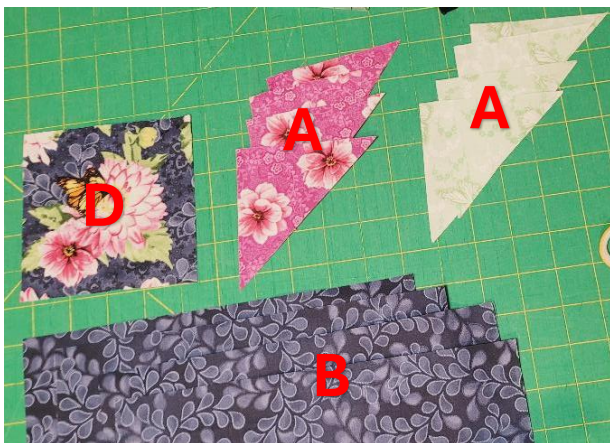
### **CUTTING INSTRUCTIONS:**

PATCH D (center square) – cut  $4 \frac{3}{4}$ " square (must be exact cut)

PATCH A – cut four 4" squares and then cut diagonally. TWO in each color.

PATCH B – cut four  $10 \frac{1}{2}$ " x 3" rectangles

PATCH C – cut one 4" square and then cut diagonally as shown.

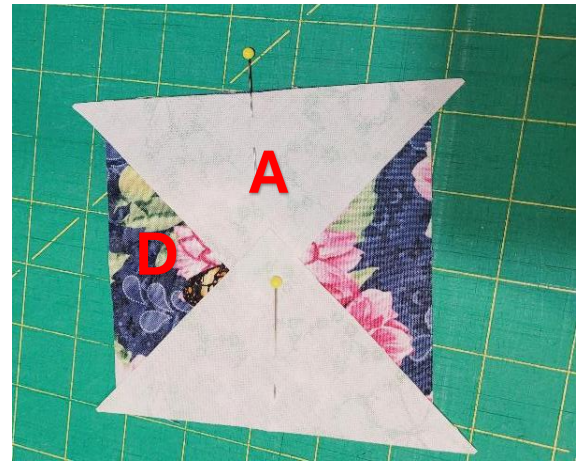


**SEWING INSTRUCTIONS;**

1. Fold Patch D in half in both directions to find the center of all 4 sides. Select 4 triangles of Patch A and fold them to find the center of the “long” side.



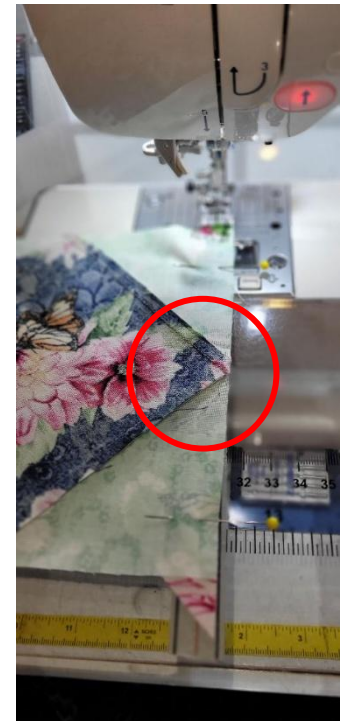
2. Align two Patch A's with the centers of opposite sides of Patch D. Sew two PATCH A of one color along opposite sides of PATCH D. Making sure you do the same side for each of the four pairs. (layout complete block, fold face to face the B patches, and stitch together).



3. Press Flat. Trim this Block to 6 ½ “ square.



4. Repeat Steps 1 and 2 with the Patch C triangles. Note – when you have folded the triangle in half place the fold on the center point. Stitch from the side where you can “SEE” the point and stitch close to the point but not over it.



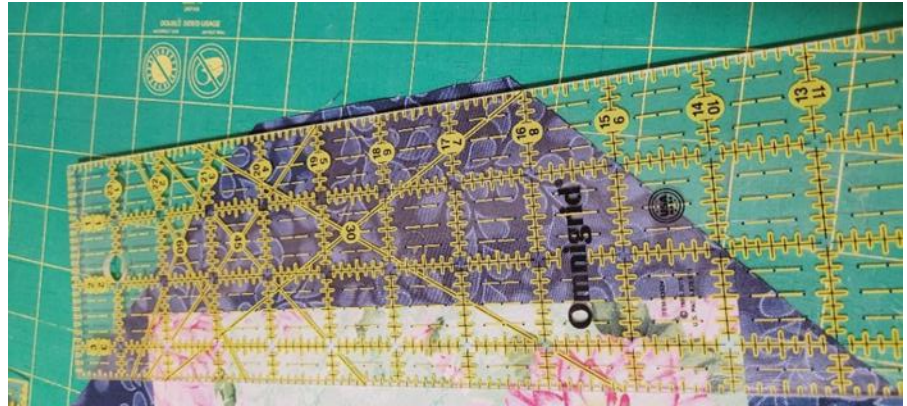
5. Trim this block to 9 inch square.



6. In the same way as 4 and 5 - Fold Patch B's in half, sew to sides of block.

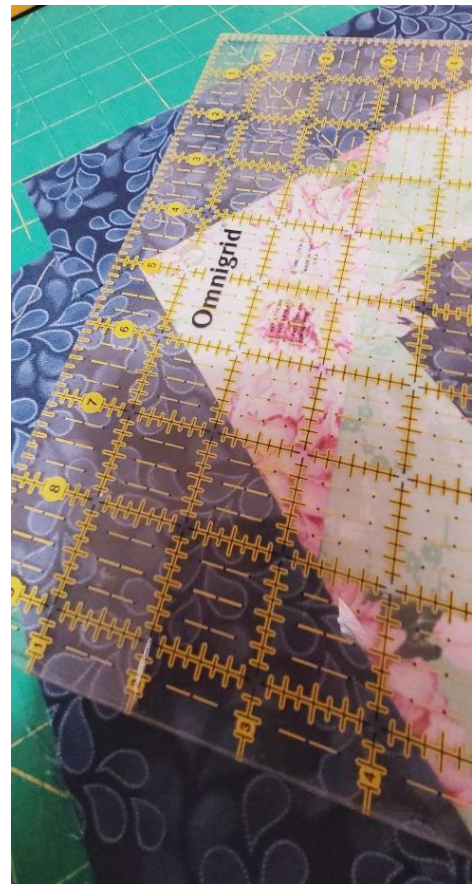


7. Next measure  $2\frac{1}{2}$  " from the sewn edge of patch B and trim along those lines. This is where the final patch A will be sewn to.



(I must admit, that I did the following step 8, however, you can skip this step and move on to step 9. Then square thw entire UNFINISHED block to the  $12\frac{1}{2}$  inch square after the last 4 patch A's have been sewn onto the block)

8. Lay your ruler at a 45 degree anegle at the points of patch B's and measure  $\frac{1}{4}$  inch away from the point. Trim this 45 degree angle line. The measurement from one side to the other should be  $12\frac{1}{2}$  ".





9. Repeat steps 1 and 2 with the final four Patch A's. Sew to the block. Trim to  $12\frac{1}{2}$  " square. (finished block is 12")

